



HOME STAR

VINYL WINDOWS FOR BETTER LIVING



Welcome Home



HOME STAR

8-POINT WARRANTY



5 CORE ELEMENTS

1. Lifetime Warranty on all moving parts.
2. Transferable to Next Home Owner
3. Glass Breakage Covered
4. Warranty is not Pro-rated. Any part. Any time. The window is covered.
5. Lifetime Seal Failure Warranty

plus



THREE CORPORATE PARTNERS



1. Good Housekeeping

For over 100 years, customer satisfaction, superior quality, and a dependable warranty are all characteristics that Good Housekeeping has required in order to award its seal to a product. The Good Housekeeping Research Institute sets the benchmark for product integrity and quality, as well as consumer trust and brand loyalty. Its demanding standards are in place to give customers the peace of mind that if a product has won the seal, it is high quality and can be trusted. If your windows fail to perform, Good Housekeeping offers a 2-year money back guarantee.

2. Earthwise

The HomeStar is manufactured by an Earthwise LLC Member. The Earthwise Group consists of 17 individual manufacturers who band together for mutual support. All Earthwise companies guarantee to honor every other Earthwise member in the event of a natural disaster or other situation.



3. Certified: Made in America

Earthwise windows have the only designation for being Made in the USA. This insures that all assembly is done, and over 95% of components are manufactured, here in America.



Buy With Confidence.

Home Guard Doors & Windows is a proud member of EarthWise LLC. EarthWise is a national organization comprised of 17 manufacturers who share technology, buying power, and provide security to the homeowner through shared responsibility of warranty claims in the event that a member company ceases to exist. As an EarthWise customer, you have assurance that your windows are supported by 17 manufacturing facilities and that they are further insured by the Good Housekeeping Seal of Approval. The Good Housekeeping Seal of Approval is the most highly respected and well known symbol for the assurance of product quality. Good Housekeeping underwrites

all Earthwise windows and guarantees to refund your purchase if found to be defective for the first two full years after your purchase. Three great names working in concert: Home Guard, Earthwise and Good Housekeeping.



HOME STAR

Features

It is the marriage of virgin vinyl with the hand-made craftsmanship of our Amish country factory that creates this outstanding window series. Home Guard Industries has developed a new generation of windows, built for a lifetime of beauty and a world of energy savings.

The HomeStar design features include fully fusion-welded corners on the sashes and frames for an air-tight, water-tight, lifetime bond. The interior of the HomeStar is designed with curved millwork to resemble a wood window - without the maintenance of wood. The locking hardware for the HomeStar is a specially designed, French curve locking system which is recessed into the rail of the window for clean, unobstructed views.

The HomeStar proudly features Conservision glass systems, the ultimate in energy saving technology. This system combines an exclusive high tech spacer with double strength glass prohibiting heat or cold from entering your home. Simply put, this technology is unsurpassed in performance and will dramatically reduce your heating and air conditioning costs.

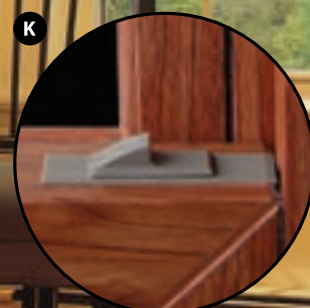
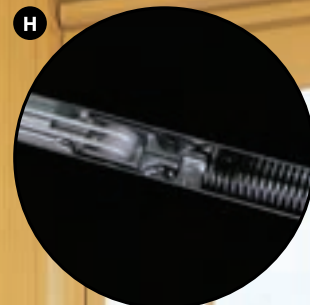
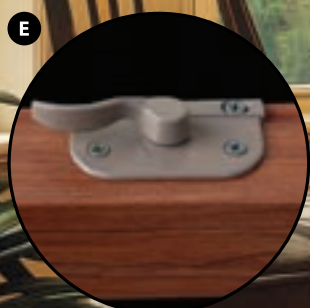
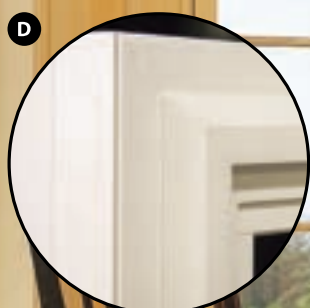
Exclusive HomeStar Features

- A** Fully contoured lift rail designed for easy lift
- B** Clean corner shadow grooving on fusion welded sash
- C** Fully fusion welded sash and frame
- D** Beveled Exterior for clean exterior lines
- E** Flush mounted cam action lock for an unobstructed view and increased security
- F** Interlocking sashes remain solid and strong in high winds
- G** Safety locking tilt bar allows sash to safely tilt
- H** Smooth glide Block & Tackle balance system
- I** Equal sight lines for clean, symmetrical appearance
- J** Forced entry rated night latch for safe ventilation
- K** Low profile tilt latch for sleek design and easy tilting
- L** Double strength glass* reduces noise/prevents breakage

(*Dual Pane Units Only)

Optional Foam Filled Frames

Foam filled frames can increase the insulating value of the window's frame and sash members dramatically. This translates into a 3-8% improvement in the windows overall U-Value. This foam fills each pocket, enhancing condensation resistance and improving frame rigidity.



HOME STAR DOUBLE HUNG WINDOWS

The HomeStar double-hung style window tilts in for extremely easy cleaning, but won't drop out of the frame like other units due to our unique, patented tilt-lock® safety system.

All HomeStar windows can be connected to each other to create dramatic windowscape views - your only limit is your imagination. HomeStar windows offer a full array of Conservision glass options, a myriad of decorative glass designs and premium features only found in high-end windows.



HOME STAR SLIDER WINDOWS

HomeStar Slider Windows

The HomeStar Slider Window offers stylish comfort as well as easy gliding and energy saving HGI craftsmanship. Beveled exterior lines, trouble-free brass rollers and lift-out, easy clean sashes provide a bright, modern upgrade to any home. Two or three panel styles are available to produce the panoramic view of a picture window with the functionality of a ventilating window.



CASEMENT, AWNING & PICTURE WINDOWS

HGI's wide selection of Casement, Awning & Picture window styles are a perfect addition to both traditional and contemporary homes. Combinations of windows offer unlimited design versatility, allowing you to fill your rooms with light and let the beautiful views in. HGI's advance window technology and handmade craftsmanship keeps the unwanted elements out.

All HGI Casement & Awning windows feature a triple seal design and single-handle, multi-point operator, making these HGI windows energy efficient and easy to close.



Design pressure rating Picture (Heavy Commercial: HC75)
Air Infiltration: 0:01



All HGI Casement & Awning Windows come standard with the Stow-Away folding/nesting handle and multi-point locking system. The Stow-Away handle offers strength and easy operation in an attractive and uniquely functional design.



BAY, BOW & GARDEN WINDOWS



EXPAND YOUR WORLD VIEW.

No matter what your view, enjoy it more with a HGI Bay, Bow or Garden window. This terrific option not only brings the outside in, but dramatically enhances the curb appeal of your home. Structurally sound, and highly efficient, HGI Bay and Bow windows deliver panoramic views while maintaining the comfort level inside your home year round. Drawing upon the same great features found in our standard Double-Hung and Casement windows, HGI Bay and Bow windows offer a completely maintenance free exterior utilizing high impact UPVC vinyl.

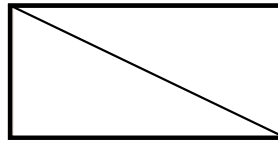
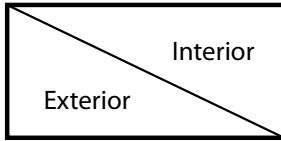
On the interior, traditional wood window styling is combined with several available color options that will enhance your rooms décor. The HGI Bay and Bow window system also features your choice of Oak or Birch seat boards which can be painted or stained to match virtually any room. Bay windows are available with double-hung or casement windows, while Bow windows feature four, five and six lite casement window configurations. With so many great features and options, you are sure to find a HomeStar Window that fits perfectly in your home.



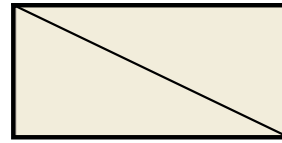
HOME STAR COLOR & WOODGRAIN OPTIONS

Interior & Exterior Color Options

The following combinations of wood grain interiors and solid vinyl interiors/exteriors are available on all HGI Window Styles.



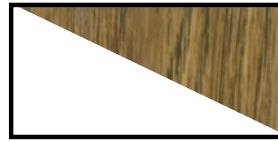
White/White



Tan/Tan



White/Light Oak



White/Dark Oak



White/Cherry

17 Colortone Exterior Options



White 280



Brown 502



Navy 521



Terratone 511



Wineberry 604



Cozy Cottage 606



Desert Tan 327



Mocha 507



Forest 522



Eggshell 503



Eldridge Gray 605



Pewter 805



Clay 807



Wicker 809



Musket 508

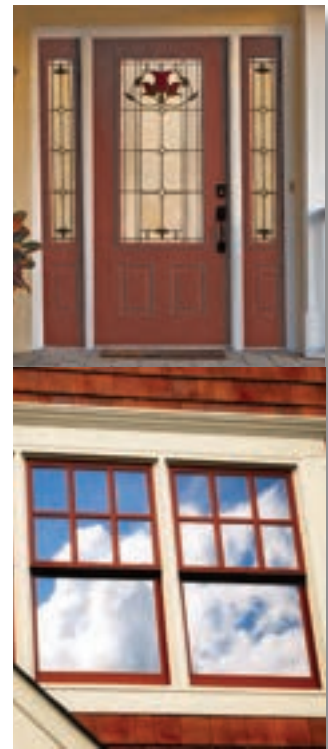


Prairie Sand 549



Black 518

ColorMatch options are also available on HGI Entry Door Systems.



Note: Due to limitations in the printing process, colors may vary - please see your dealer for exact color samples.

Muntin/Grid Options

Whether you lean toward Colonial, Mission or Modern styles, muntin bars are available in a myriad of colors, styles and sizes to achieve the look you desire. Or choose our V-Groove glass, available in Prairie, Double Prairie, Diamond or Colonial styles.

For woodgrain interiors, ask for two-tone muntins to match (white exterior, wood-grain interior). All muntins are between the glass for easy cleaning. Please see your HGI representative for details and actual samples of the many options available.



Standard Grid~White



Standard Grid~Tan



Contour Grid~White



Pencil Grid~Brass



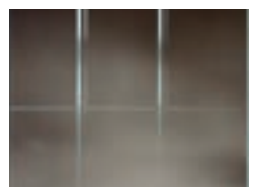
Standard Grid~Light Oak



Standard Grid~Dark Oak



Standard Grid~Cherry



V-Groove~Colonial



Conservation

High Efficiency Windows Deserve High Efficiency Glass



Conservation **100**

High Efficiency Insulated Glass System/Double Pane Clarity

- Lifetime Seal Failure Warranty
- Lowest Seal Failure Rate in the world
- Lifetime Glass Breakage Warranty
- 24 U-Factor (center of glass only)
- Dual Seal (P.T.B. & Silicone)
- Edge/Guard Stainless Steel Spacer System



Thicker Glass = Less Noise

Where most window manufacturers use single strength glass to save money, Conservation uses only double strength. Double strength glass provides better sound deadening quality, is more resistant to accidental breakage and is smoother, less wavy than single strength glass, yielding a clearer view.



Does HGI Vinyl Really Matter?

In the window world, it's not just about vinyl. Our vinyl is virgin, which means it wasn't recycled from old products (which can cause yellowing, warping and other things you certainly do not want in your windows). HomeStar windows are made from Sunshield vinyl, the finest, most durable vinyl available. Since our frames and sashes are made from thick wall vinyl, we are able to weld the corners to completely eliminate air or water infiltration. Our vinyl is heavy enough for us to shadow groove the sash corners to avoid the unsightly welds seen on other windows. Multiple chambers create a window that is very strong and extremely efficient. Remember how your mother told you to dress in layers? That's the same concept with windows: open spaces married with filled spaces in many layers. In addition, HGI's Homestar windows are durable and boast superior wind load ratings compared to wood and metal (and most other manufacturer's vinyl) windows.



THE BIGGEST AND BEST IN THE BUSINESS. PERIOD.

Conservision glass is designed and manufactured by the world's largest and most experienced glass insulator. Our glass is assembled using two separate seals, one on the spacer and one on the back side of the spacer. Because of the research and design of the Conservision glass we can prove that the chance of ever having a seal failure is one quarter of one percent after 20 years. As a matter of fact, in a laboratory comparison of seal failures, Conservision glass will outperform the next largest selling insulated glass by over 400%.

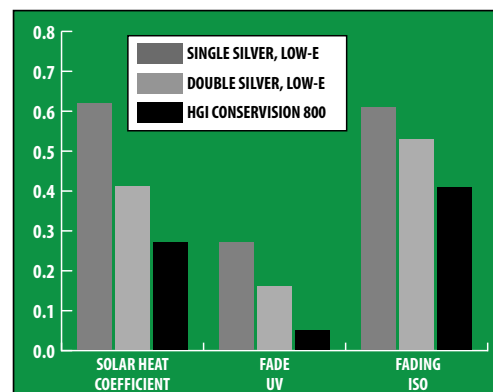


Conservision 800

High Efficiency Insulated Glass System/ Double Pane Clarity & Triple Pane Performance

- Triple Coated Silver Low e Plus Another Pane of Low Iron, Low-e
- Center of Glass only U-Factor: 0.20 (Triple pane clear is 0.39)
- Dual Sealed Units/Polyisobutylene (P.T.B.) & Silicone
- Double Strength Glass (Most windows use single strength to save \$\$.)
SHGC (Solar Heat Gain Coefficient): 0.27 (The lower the number, the better for preventing the sun's heat from entering during summer season).
- Stainless Steel Warm Edge/Guard Spacer to provide warm edge of glass.
- Lowest Seal Failure Rate in Industry. (Beats closest competitor by 1600%.)
- Lifetime Seal Failure Warranty

Conservision 800 is the most advanced dual pane glass technology available anywhere today. Conservision 800 combines the high efficiency heat saving and heat reflecting properties of the best triple silver low E glass with a second low E glass pane on the inside of the home. The inside Low E aids in reflecting the heat from your home's furnace back into the house. Because it is on a touchable surface, it is encased in a thin layer of low iron glass which actually makes it clearer than clear glass.



Smaller Bars/Better Rating

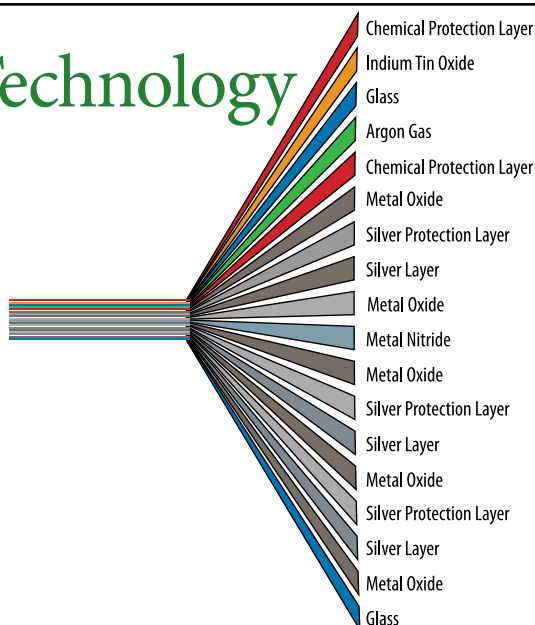
Does HGI Glass Really Matter?

Glass is glass, right? Well actually, not at all. Window glass is all about efficiency - keep the outside out and the inside in. This can be achieved in many ways, the best way being a combination of multiple technologies. Glass coatings with a thin layer of UV reflective material, are the first defense. The second is the spacer. HGI utilizes a non-conductive, stainless steel spacer that separates the layers of glass (see below). Multiple layers of glass are the third. But more layers have proven to be less efficient than just two with the proper coatings, often placed on each side of the window pane. HGI's Conservision choices have been

specially formulated to reject the sun's heat, letting more light in and keeping more heat out in the summer, while also keeping heat in during the winter. So your home stays cool and comfortable through every season. Condensation is virtually eliminated, providing a healthier atmosphere inside. What's more, Conservision provides exceptional fading protection, blocking the sun's damaging ultraviolet rays (a leading cause of fading), keeping your furniture, carpets, curtains and wall coverings beautiful for years to come.

A Wonder of Technology

HGI's Conservision is a technological wonder of the insulated glass world. Multiple layers of silver, metal oxide, protective layers and argon gas combine to ensure that the heat stays inside in the winter and outside in the summer. Dual pane Conservision 800 outperforms most triple-pane units and does so with greater clarity and longevity.



HOME STAR WINDOW & GLASS OPTIONS

CLEAN/GUARD

Windows that almost clean themselves.

Super smooth Clean/Guard coating will provide you with cleaner, low-maintenance glass. Clean/Guard harnesses the sun's UV rays to loosen dirt so water can rinse it away, leaving windows virtually spotless. Your windows will stay cleaner longer and will clean easier. Enjoy the effects that a little sun, rain and Clean/Guard glass brings to your windows, including a home that stays cooler in the summer and warmer in the winter. Clean/Guard must be ordered in conjunction with ConserVision glass with energy saving Low-e coating. Clearly, Clean/Guard glass is the choice for your windows.



How we preserve perfect glass from factory to installation.

Cover/Guard is the clear solution to window protection. This patented film defends your glass. Factory-applied to both the outer and inner surfaces in overlapping layers, it ensures that the entire glass surface is protected. When the construction is complete, the film is removed and only perfectly clear and beautiful windows remain. Cover/Guard is an option on all Home Guard windows and will be applied automatically on all Clean/Guard units.



Internal Blinds

Internal blinds add style to your window while providing the opportunity to control lighting and privacy. So easy to use, yet completely maintenance-free – you will never clean or dust your blinds again. Each blind is sealed between two panes of glass making this the perfect choice for homes with children or pets. Internal mini-blinds are available in white and almond, in manual tilt/raise & lower configurations for most window types. Casement and awning windows can be ordered with blinds, however the screen must be removed to operate the blind. See your Home Guard representative for more information on this great option.



CLEARLY BETTER™

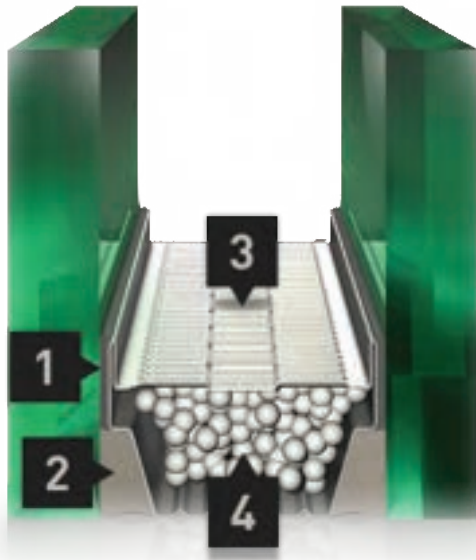
STANDARD SCREEN

Clearly Better: Super Transparent Screen

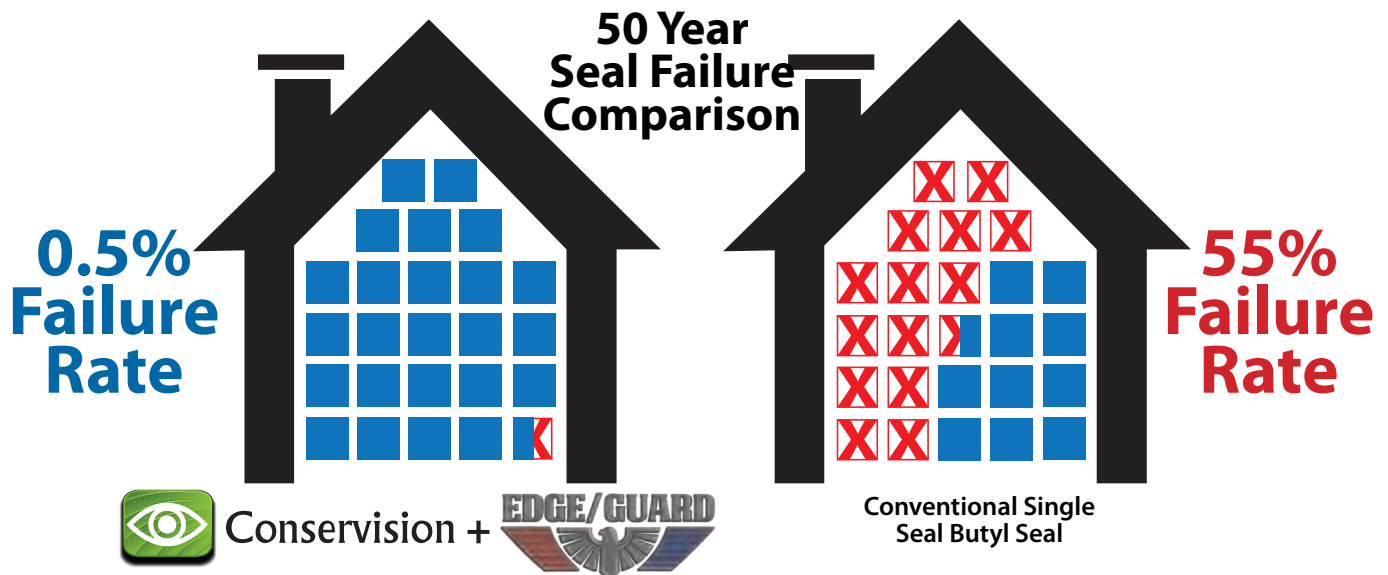
Introducing a revolutionary new screen material with high-tech fiber that allows excellent protection against unwanted pests, but appears very clear (nearly invisible). Now available as an option on all Home Guard operational windows. **Ask to not see it today!**



Because of our advanced design and fabrication, HGI provides a **lifetime** guarantee on our **Edge/Guard** spacer units for home owner residential installations. **Edge/Guard** is cutting edge technology, incorporating a stainless steel spacer with airtight bent corners and a dual-seal construction of compressed polyisobutylene (PIB) and silicone. Since **Edge/Guard** is a warm-edge IG, the possibility of indoor condensation is greatly reduced. **Edge/Guard** boasts the lowest failure rate in the industry - 10 times better than the industry average. **Edge/Guard** also edges out the competition with outstanding thermal performance and solar control.



1. **Primary Seal:** Polyisobutylene (PIB) minimizes moisture permeation, is UV resistant and provides an outstanding argon barrier.
2. **Secondary Seal:** Specially formulated silicone for IG units provides long-term adhesion, is unaffected by UV exposure and provides excellent durability when exposed to moisture. Silicone also provides structural integrity.
3. **Spacer:** Stainless steel spacer features a roll form design to provide maximum area for primary and secondary sealant coverage. It provides increased resistance to condensation and less stress on IG seal system. No polymer content eliminates the risk of chemical fogging.
4. **Desiccants:** Beaded molecular sieve provides initial frost points below -65°F. Desiccant assures optimum moisture adsorption while minimizing the effects of temperature-related pressure changes.



A lot of manufacturers talk about performance, but what about durability? Performance over the long haul? That's where Edge/Guard excels, delivering the industry's lowest failure rate, plus outstanding thermal performance and solar control.

Tests conducted in an independent test lab where heat and cold conditions replicate a 50 year, the Conservision + Edge combination has logged a failure rate of 0.5%, or one-half of a single window failures out of each 100 windows installed. Conventional single-seal butyl configurations have a failure rate of 55%, that is 55 glass unit failures out of every 100 installed - more than one out of every two windows!

Through the hottest summers and coldest winters, Edge/Guard is engineered for maximum seal durability. With its proven durability Edge/Guard will save heating and cooling energy for years to come. Exceptional longevity and performance ... this is what the future of insulating glass looks like.

PREMIUM PATIO DOORS

"The finest patio door in its class."



Tilt, Raise & Lower Mini-Blinds available in standard and custom sizes.

Available Handle Options



Standard
White



Premium
Antique
Brass



Premium
Black
Nickel



Premium
Bright
Brass



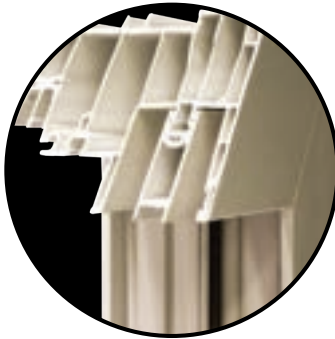
Premium
Brushed
Chrome



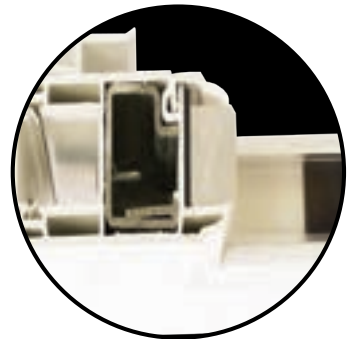
Premium
Oil-Rubbed
Bronze

Premium Patio Door Features

Heavy wall multi-cavity frame & sash makes this door the top performer in its class.



Heavy metal reinforcements in sash profiles.



Alloy monorail system creates the EZ Glide sash feature.



Self-adjusting top and bottom screens create the EZ Glide feature.



Two-point adjustable receiver increases security and insures a tight fit.



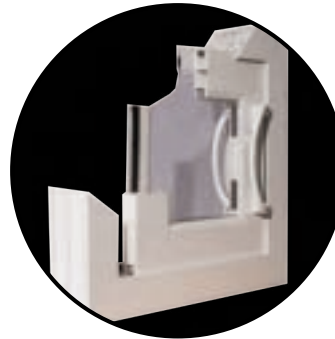
Multi-point locking system for tight fit and added security.



High-tech Ultrex rollers outperform brass rollers for easy glide and longevity.



European design that exceeds strict Canadian and US energy codes.



Design Pressure Rating (Light Commercial): LC55
Air Infiltration: 0.11





OLD WORLD CRAFTSMANSHIP MEETS MODERN TECHNOLOGY

HOME GUARD Industries' modern, 170,000 sq. ft. manufacturing facility is located on 22 acres right in the heart of the small community of Grabill, Indiana. Grabill is a quaint town of 900 residents, supported by antique and custom cabinet shops. The surrounding area has been farmed by generations of Amish families, well known for their detail and craftsmanship. The Grabill location provides HOME GUARD with the perfect atmosphere to produce custom window and door products with uncompromising efficiency, speed and quality.



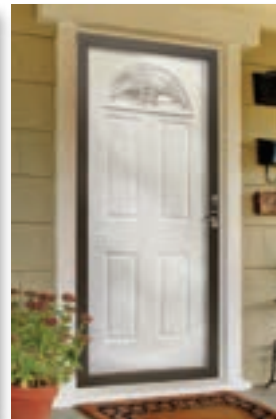
Steel Entry Systems



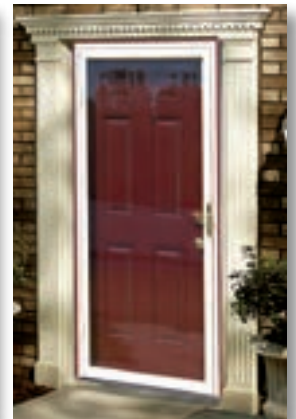
Security Storm Doors



Fiberglass Entry Systems



Welded Aluminum Storm Doors



Steel Security Storm Doors

